



Government of the  
Commonwealth of Dominica

**WELCOME TO THE  
NATURE ISLAND OF THE CARIBBEAN**

# **DOMINICA**

**PROTOCOLS FOR YACHTS  
WISHING TO TRAVEL TO THE ISLAND**



# TRAVEL PROTOCOLS FOR ENTRY INTO DOMINICA

## General protocols and guidelines upon arrival:

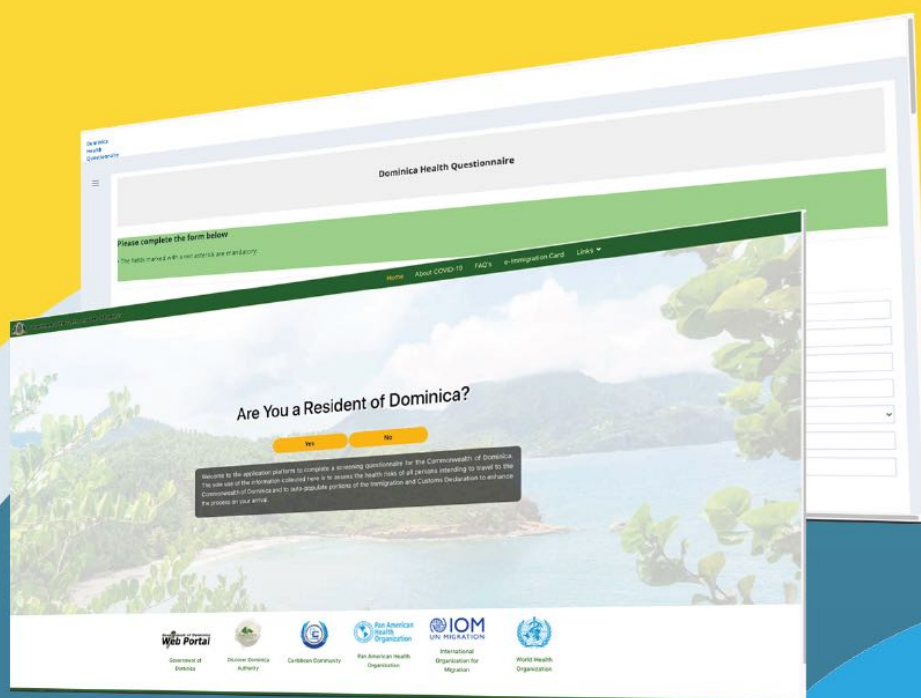
- Travellers are required to wear face masks at all times during the arrival process up to and including disembarkation and leaving the port of entry.
- Travellers must observe physical distancing
- Travellers must practice good respiratory etiquette and personal sanitization
- Travellers must follow all instructions of health care staff and officials



# PROTOCOLS FOR PRE-ARRIVAL

## Compulsory requirement for all arriving travellers

All travellers must submit a health questionnaire online at least 24 hours prior to arrival in Dominica (website) at <http://domcovid19.dominica.gov.dm/>



# PROTOCOLS UPON ARRIVAL

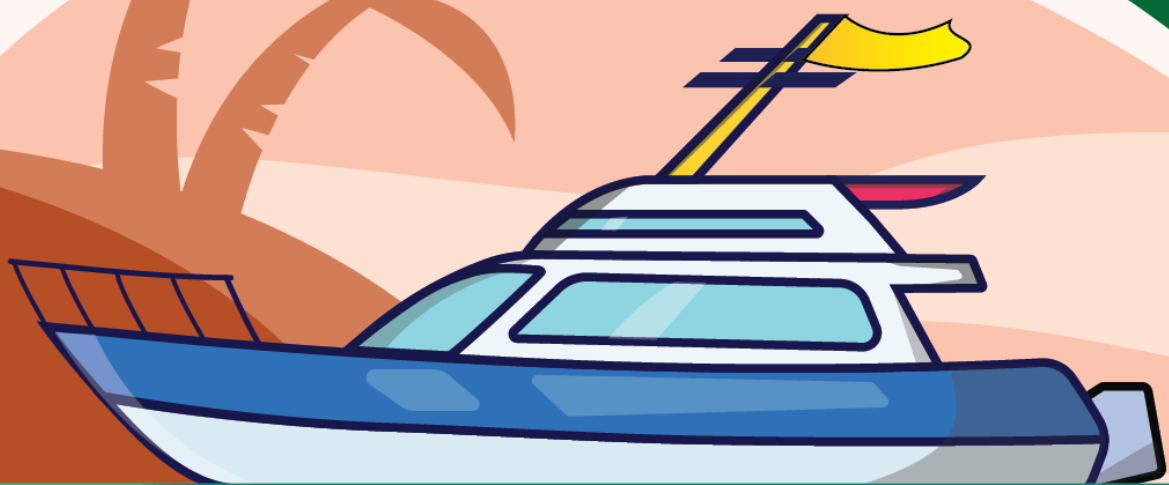
3. Captain of vessel will:
  - a. proceed to berth at Cabrits Cruise Ship Berth or moor or anchor in the Quarantine Zone.
  - b. await clearance and instructions to disembark from local authority.
  - c. be required to sanitize hands at sanitization stations as directed;
  - d. be required to undergo a health assessment to include a temperature check;
  - e. be conveyed to Immigration for processing and to Customs for screening.
  - f. Return to vessel.

Submission of confirmation of the health notification to travel for all passengers and crew, as well as Immigration and Customs clearance may be facilitated by the yacht agent.



# PROTOCOLS UPON ARRIVAL

1. A Quarantine Zone will be established by DASPA in conjunction with the Police. Yachts will be required to remain in the Quarantine Zone for a duration as advised by the health authorities. While in the Quarantine Zone, vessels will be required to fly a yellow 'quarantine flag' to facilitate identification. A penalty for leaving the quarantine zone without medical clearance is set at \$2,500.
2. When a vessel is medically cleared, they will be allowed to move to the "cleared" area of the harbor as established by DASPA. This will facilitate identification of vessels within quarantine versus those which have been medically cleared.



# PROTOCOLS FOR CREW MEMBERS/TRAVELLERS

If the crew members / traveller on the vessel is coming from a country which fits into the low/medium/high risk protocol description and remaining in Port for a period longer than five (5) days, the crew member/traveller must be PCR tested, at their cost, on Day One (1) and return to their vessel for mandatory quarantine of five (5) days. PCR Test will be repeated on Day Five (5) and crew members / traveller are to await results on their vessel.

- a. If the results of the PCR test done on Day five is positive, the crew member / traveller will be admitted to COVID isolation Unit until released by an authorized Health Professional. Hospital fees will apply.
- b. If the results of the PCR test done on Day five is negative, the crew member / traveller will be deemed medically cleared at the discretion of Medical officials.



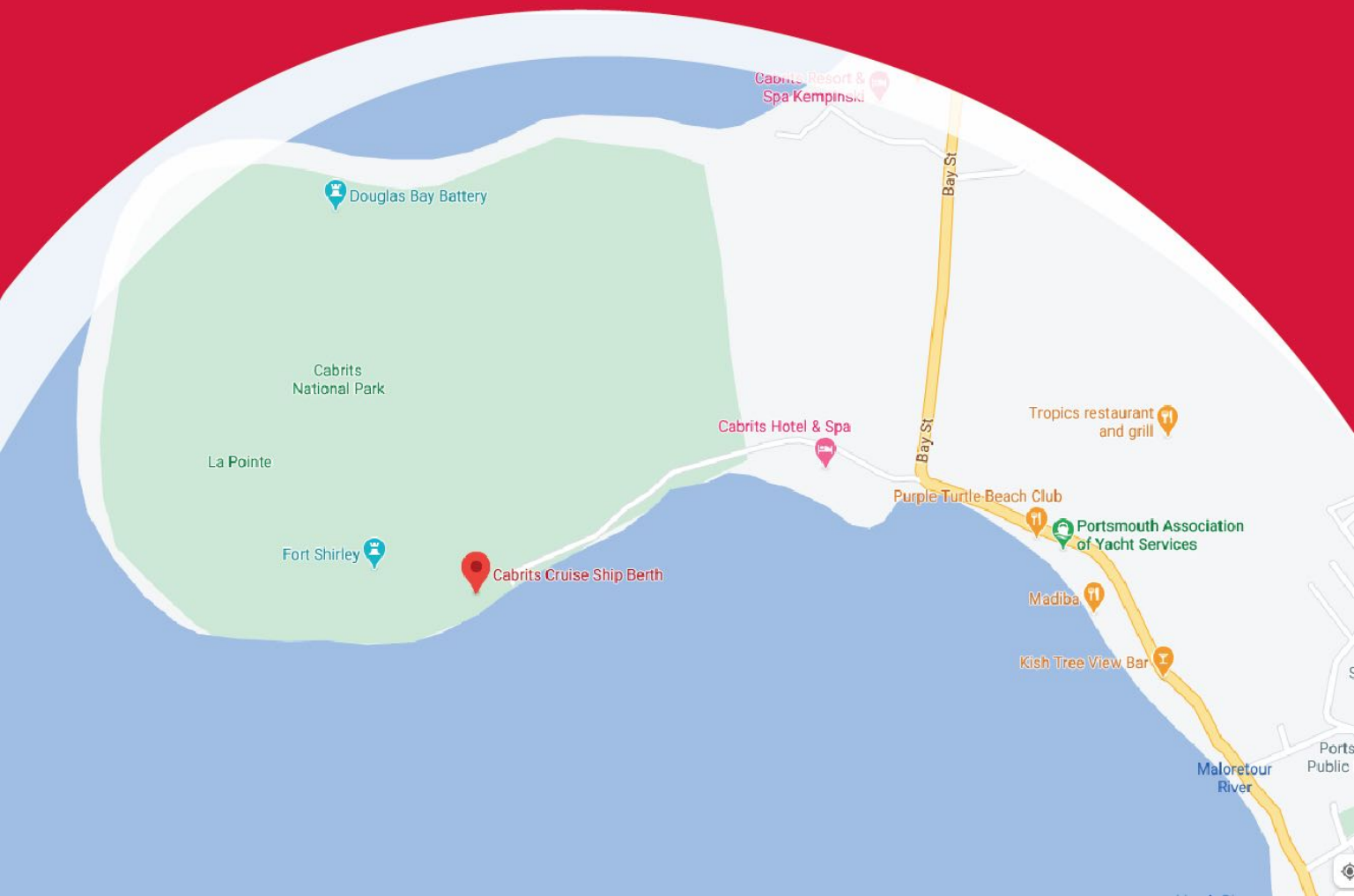
# RESPONSIBILITIES OF THE YACHT AGENT:

1. Completing the necessary training sessions by the DDA and EHD
2. Monitoring and surveillance
3. Informing the Primary Health Care Unit of incoming yachts at least five hours before arrival in order to assign staff to screening facility.
4. Making the necessary arrangements for the guests to undergo PCR swab test and other health related checks.
5. Logging in daily temperature checks and symptoms on the Ministry of Health Surveillance Database.
6. Ensuring guest adheres to the protocols set out by the Ministry of Health, Wellness and New Health Investment.
7. Reporting to the District Medical Officer and/or Hotline if guests are in breach of the protocols and/or goes on island unexpectedly.
8. Ensuring that all guidelines are adhered to.



## OTHER PROTOCOLS:

- a. No more than 30 vessels, at any given time, shall be allowed to dock
- b. Landing for all yachts shall be at Cabrits Cruise Ship Berth at Prince Rupert's Bay only.
- c. Pre-arrival protocols shall be required minimum 24-hours before arrival
- d. All travelers shall be required to remain in quarantine and shall be subjected to a 5-day PCR test as per existing protocols for Crew aboard vessels.







Government of the  
Commonwealth of Dominica

The Dominica Government reserves the right to change these procedures as deemed necessary so as to ensure the safety of all travelers and residents. All updates will be provided accordingly.

**Ministry of Health, Wellness and  
New Health Investment, Dominica**

COVID-19 HOTLINE:

(767) 448-2151 • (767) 448-2153 • (767) 448-2156  
(767) 611-4325 • 1 800-219